

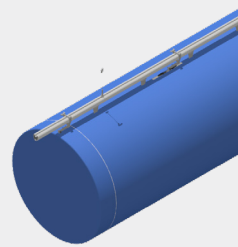
A combination of internal hoops and tensioning baskets are used to help maintain fabric shape and retention. Pull-Tight systems improve start-up performance and aesthetics (no sagging/wrinkles) along with a longer life expectancy when compared to multiple row, horizontal suspension systems. Ideal for VAV applications.

**IHS**

**1 - 5% Deflation**

- 8" - 60" diameters (203mm - 1524mm)
- Fabric attached to 1 row Track or Cable at 12 o'clock every 12" (305mm)
- No noise at start-up with minimal fabric motion

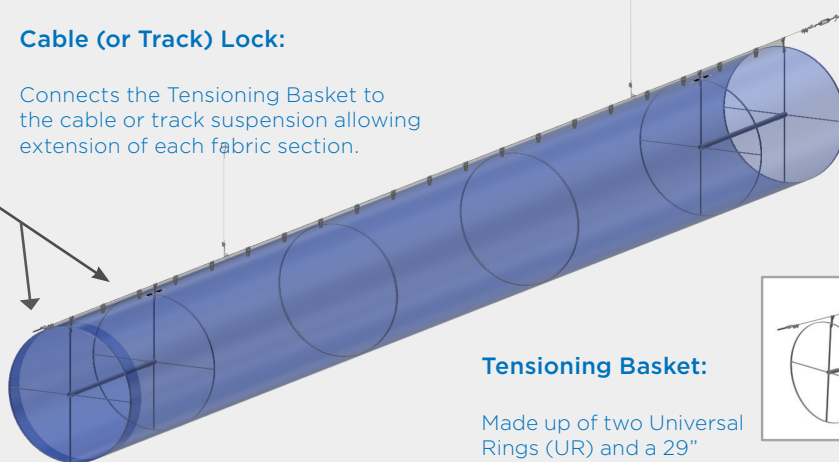
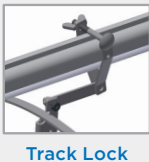
**Track**



- 8 ft (2.4m) long stock pieces
- Best for multiple elevation changes or fittings
- Hangs from ceiling drops eliminating the need for anchor attachments at each end

**Cable (or Track) Lock:**

Connects the Tensioning Basket to the cable or track suspension allowing extension of each fabric section.



**Tensioning Basket:**

Made up of two Universal Rings (UR) and a 29" (737mm) tube. Cable/Track Locks attach to the top of both URs allowing the section to be tensioned to smooth wrinkling and improve appearance when the AHU is off.

